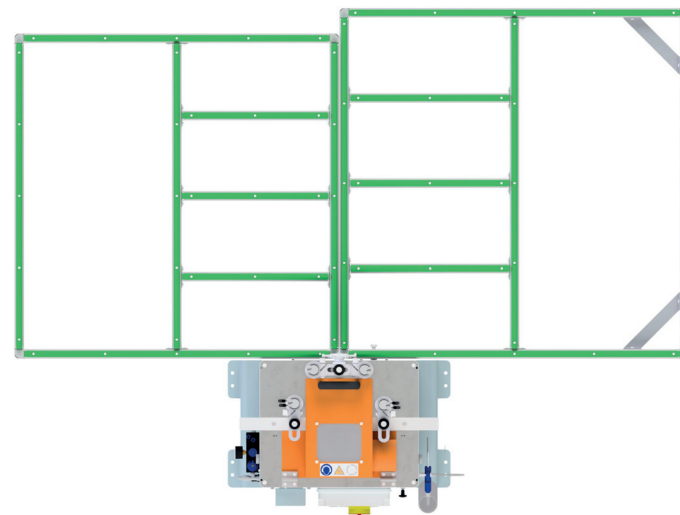
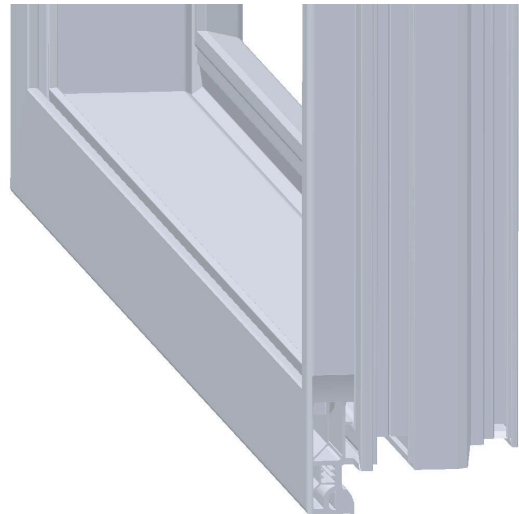


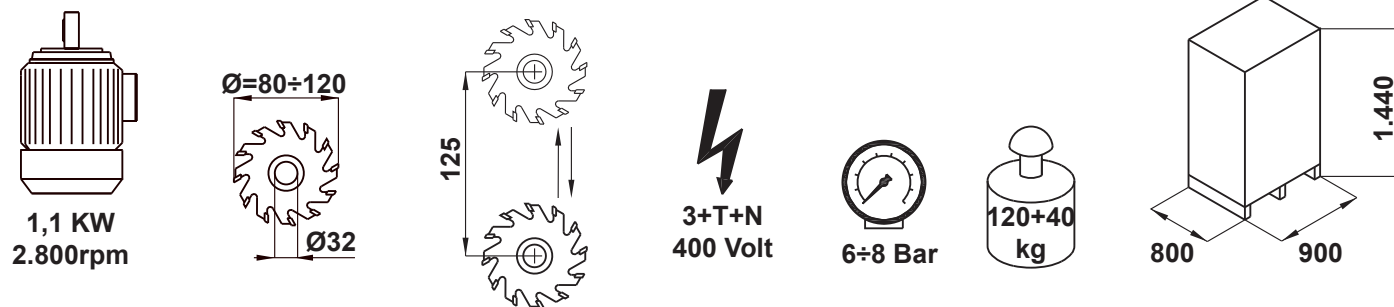
**MDSCR** takes up little space: the two tables overlap each other and, in turn, they overlap the machine.



View from above

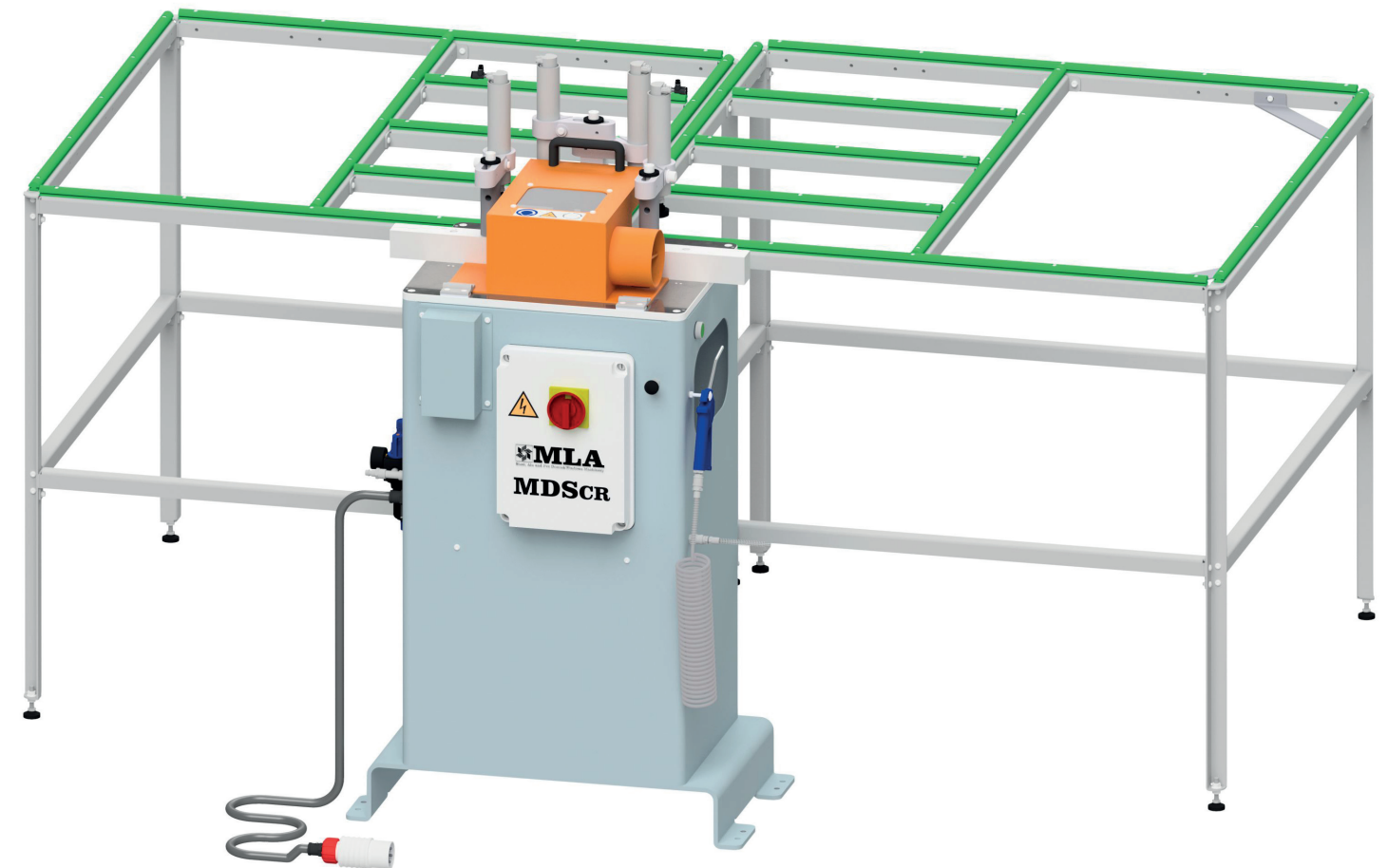


Machining example



The Company reserves the right to amend and improve its products without notice.

**Semi-automatic milling machine with quick change system of the mill unit to mill out the central section of the slave sash**



Code 101DSCR+502565V1

The milling machine **MDSCR** is conceived to mill out the central section of the slave sash on pvc doors and windows.

A pair of optional tables (code 502565V1) makes the movement of the sash easier.

By keeping a frontal position, the operator will be able to work the sash both on the left and on the right.

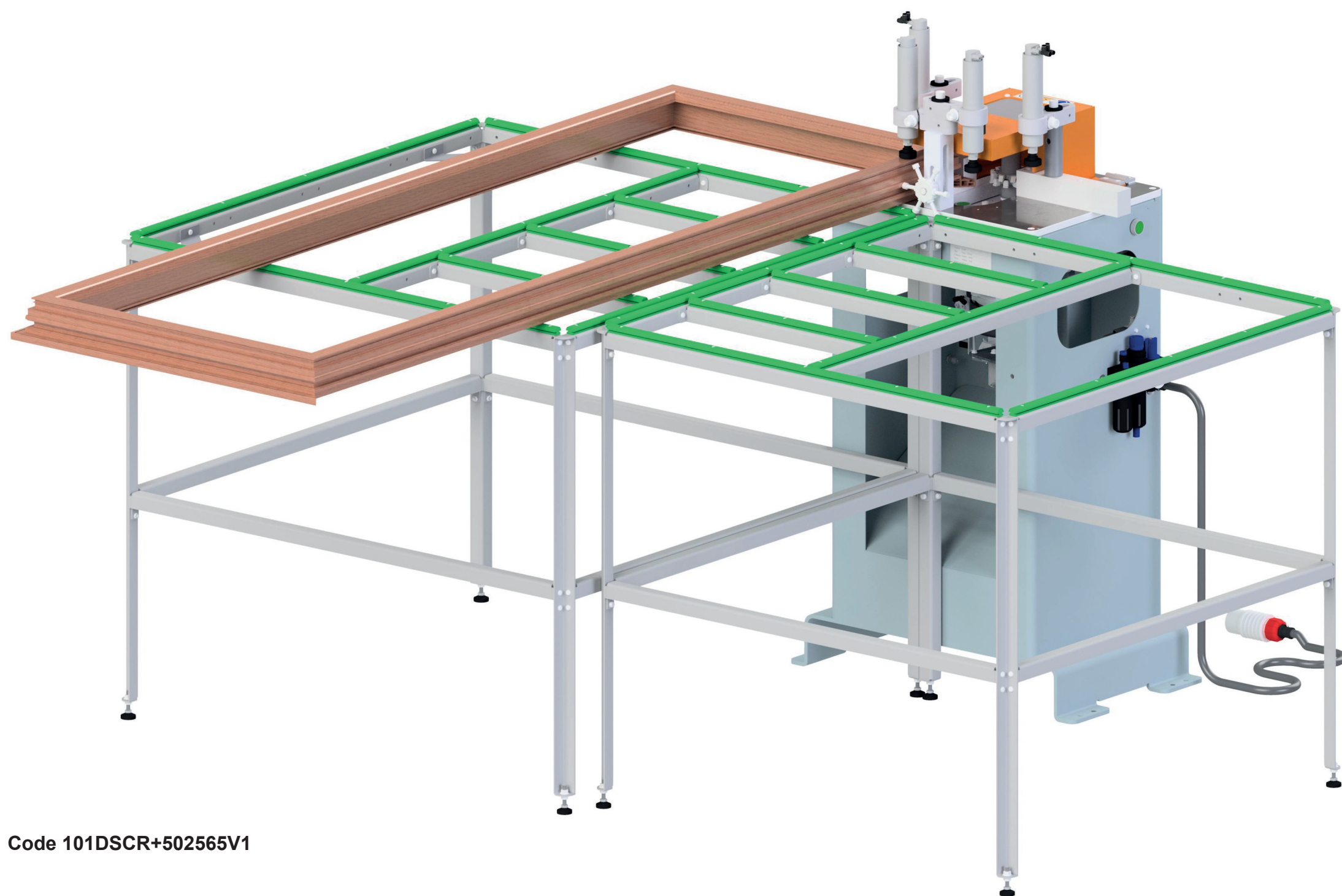
**MDSCR** is equipped with a **certified bimanual device** (EN574-3A).

The **sliding shoes/guides** on recirculating balls and the forwarding by means of an **oil-pneumatic cylinder** make the milling smooth and constant.

The viewing window on top of the protection is made of scratch-resistant polycarbonate and ensures a perfect view of the working area throughout the years.

The nickel-clad, ground and polished work surface guarantees perfect smoothness and scratch resistance.





**Code 101DSCR+502565V1**

On **MDSCR** the angles' removal is done in two steps: the first angle can be removed by positioning the sash on the left; then the second one can be milled by placing the sash on the right.

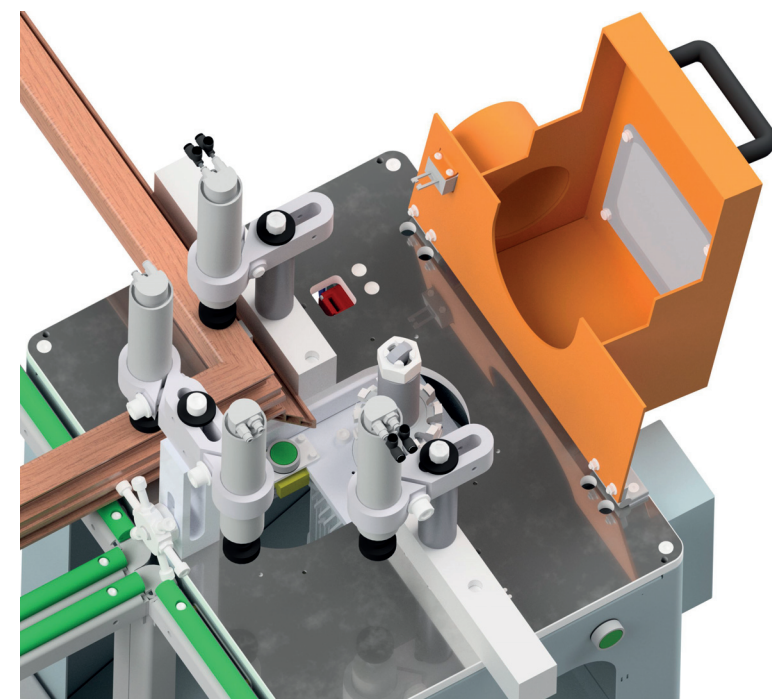
By pushing the switch on the right of the electric board, the sash is clamped at low pressure with 30mm stroke cylinders.

By pushing the opposing bimanual buttons, the clamping becomes high pressure, the motor starts rotating and the milling cycle begins.

A limit switch stops the milling stroke at the required position.

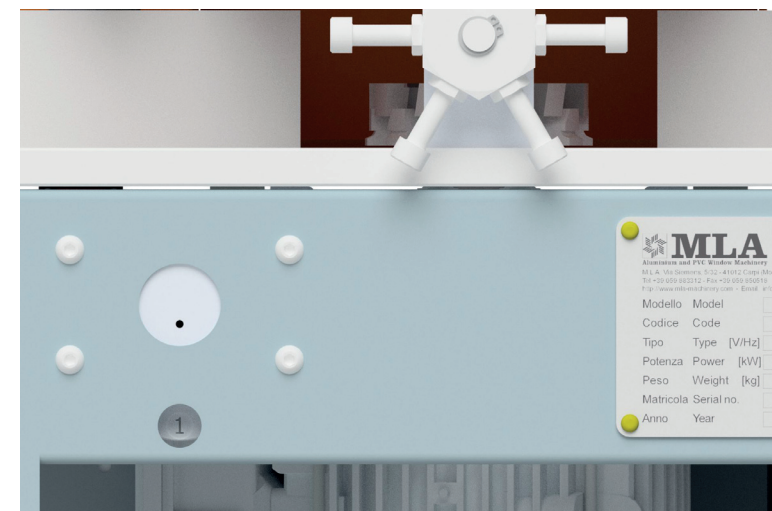
At the same time, the milling rotation ends and the milling unit returns to rest position; by pulling the switch, the sash is unclamped.

The motor is provided with an integrated **holding brake**, which brings the rotation to a halt instantly.



The quick change system of the mill unit is pneumatic: after opening the protection, it is possible to activate it by pressing the green button.

It is possible to make three different set-ups of the milling depth by means of a revolver with three pairs of stops placed on the work surface.



It is possible to make three different set-ups of the milling length by means of a revolver with three positions placed under the work surface.